



**E & A CONSULTING GROUP, INC.**

*Engineering Answers*

10909 Mill Valley Road, Suite 100 • Omaha, NE 68154-3950  
P 402.895.4700 • F 402.895.3599  
www.eacg.com

Dear Homeowner:

The SID has contracted concrete work to be done on the streets in your SID. A contractor will be on site to do work which includes removing the existing concrete that is damaged and replacing it with new pavement.

Throughout the course of this project, there could be some minimal damage done to yards and or sprinkler systems. The contractor that is on site will be responsible for replacing any damaged sprinkler lines and/or heads. They will also be replacing any sod that is torn up while on site. Once the new sod is laid, it will be the responsibility of the homeowner at each lot to water the new sod until it has re-established itself.

Before starting the work on site, each contractor must put in a call and have all the utilities in the area located. You might notice some areas in your yard that have been flagged and/or spray painted. This does not indicate the area in which they will be working. It is just to give them an idea of what kind of utilities are in the area that could possibly be hit while the contractor is on site working.

All work that is completed in public Right-of-Way and follow City of Omaha and Sarpy County specifications.

The work in your SID should not take longer than 30 days to complete. Please let me know if you have any questions or concerns on this at all.

Thank You,

A handwritten signature in black ink, appearing to read 'Nelson C Flores', written over a horizontal line.

**Nelson C Flores**

Construction Administration Tech.

***Engineering Answers***...by assisting our clients

E & A Consulting Group, Inc.

10909 Mill Valley Road, Suite 100 • Omaha, NE 68154

402.895.4700 (o)

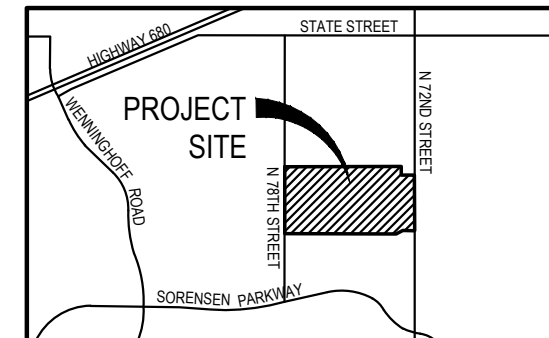
[eacg.com](http://www.eacg.com)



# SPRINGBROOK

## 2023 STREET RECONSTRUCTION

SID NO. 504  
DOUGLAS COUNTY, NEBRASKA



VICINITY MAP



### APPROXIMATE BID QUANTITIES

ITEM	DESCRIPTION	QUANTITY	UNIT
1	CONCRETE PAVEMENT REPAIR, LARGE AREA	597	SY
2	CONCRETE PAVEMENT REPAIR, SMALL AREA	781	SY
3	FULL DEPTH SAW CUT EXISTING PAVEMENT	1,666	LF
4	ADJUST MANHOLE TO GRADE	4	EA
5	ADJUST WATER VALVE TO GRADE	2	EA
6	REMOVE & REPLACE PCC SIDEWALK	96	SF
7	REMOVE & REPLACE PCC CURB RAMP	756	SF
8	CONSTRUCT DETECTABLE WARNING PANEL (8)	64	SF
9	REMOVE AND REPLACE FAULTY SUBGRADE	25	TN



### INDEX OF SHEETS

SHEET NO.	DESCRIPTION
1	COVER
2	EAST
3	WEST
4	TOTAL QUANTITIES
5	COMPOSITE MAP



**APPLICANT**  
SID # 504  
Deborah Lowe, Chairman  
11440 West Center Rd, Ste. C  
Omaha, NE 68144  
P: 402.334.0700  
F: 402.334.0815  
bbeller@fdjlaw.com

**DESIGNER**  
E & A Consulting Group, Inc  
Teresa Wooten, P.E.  
10909 Mill Valley Road, Suite 100  
Omaha, NE 68154  
P: 402.895.4700  
F: 402.895.3599  
twooten@eacg.com

**INSPECTOR**  
E & A Consulting Group, Inc  
Randall L. Pierce, P.E.  
10909 Mill Valley Road, Suite 100  
Omaha, NE 68154  
P: 402.895.4700  
F: 402.895.3599  
rpierce@eacg.com

**CONTRACTOR**

**E & A CONSULTING GROUP, INC.**  
Engineering • Planning • Environmental & Field Services  
10909 Mill Valley Road, Suite 100 • Omaha, NE 68154  
Phone: 402.895.4700 • Fax: 402.895.3599  
www.eacg.com  
State of NE Certificate of Authorization #CA0008

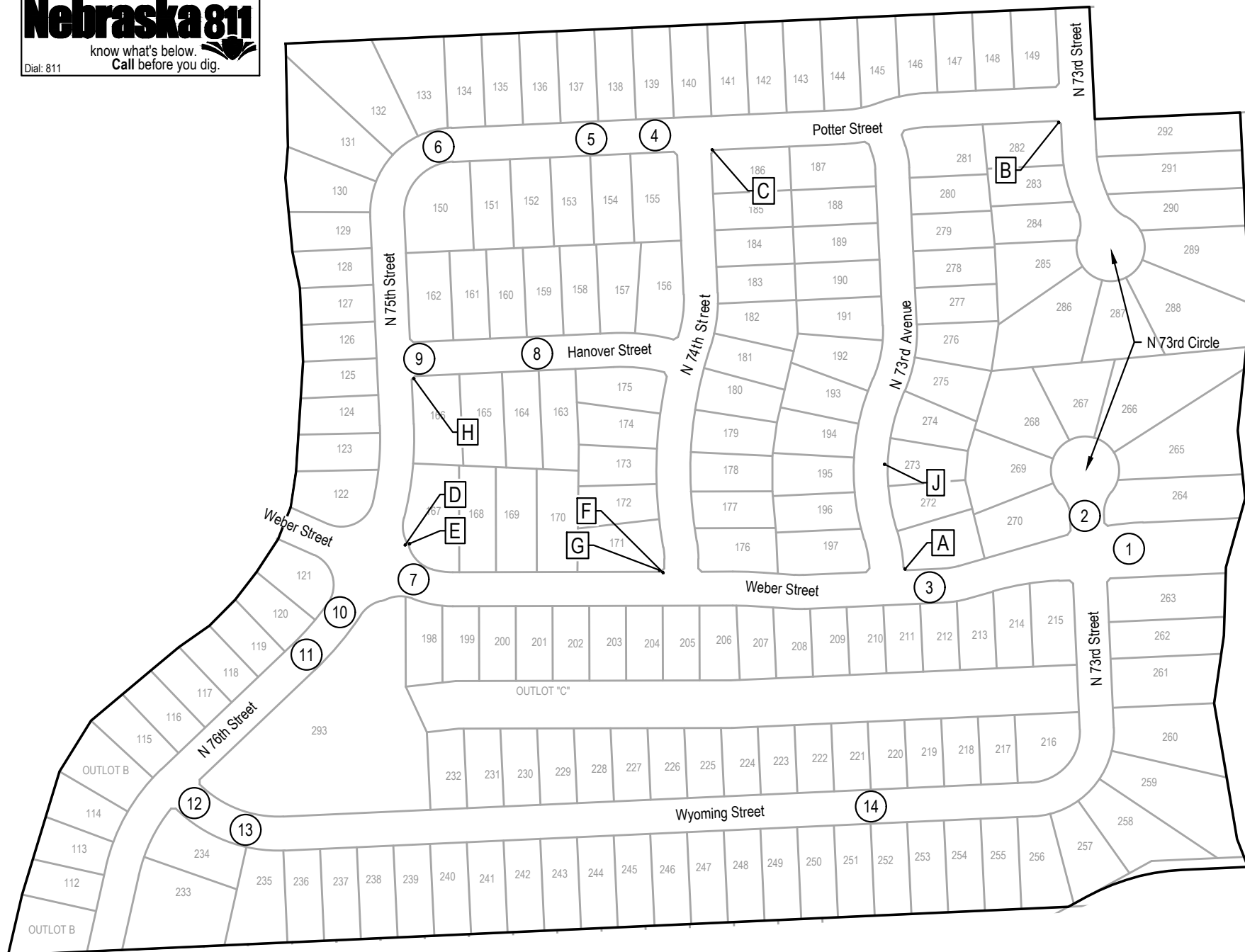
**Engineering Answers**

**SPRINGBROOK**  
**2023 STREET**  
**RECONSTRUCTION**  
SID 504  
DOUGLAS COUNTY, NEBRASKA

**COVER**

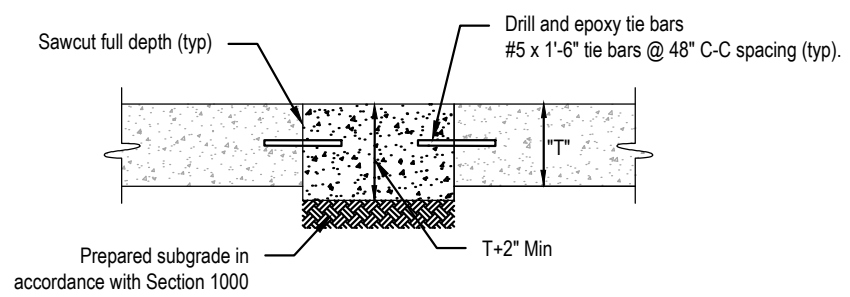
Revisions  
Date Description  
6/13/2023 TAM  
Drawn By: JMB  
Scale: 1" = 30'  
Sheet: 1 of 5

6/13/2023 2:49 PM K:\Projects\2003\181\p05\Engineering\CAD Files\Paving\Springbrook 2023 Street Reconstruction-000.dwg  
Jessica Brown



2023 STREET RECONSTRUCTION									
AREA NO.	NO. POURS	SAW CUT L.F.	CURB L.F.	WIDTH	X	LENGTH	LARGE AREA EST S.Y.	SMALL AREA EST S.Y.	NOTES
1	1	54		13.0	x	14.0		20.2	
2	2	75		12.5	x	25.0		34.7	
3	1	71	45	12.8	x	45.0	63.8		
4	2	65	45	12.5	x	30.0		41.7	
5	2	80	60	25.0	x	30.0	83.3		
				12.5	x	30.0	41.7		
6	2	65	45	12.5	x	30.0	41.7		
				12.5	x	15.0	20.8		
7	1	55	30	12.5	x	30.0		41.7	
8	2	50	30	15.0	x	25.0		41.7	
9	2	65	45	9.0	x	25.0		25.0	
				12.5	x	15.0		20.8	
10	1	35	15	10.0	x	15.0		16.7	
11	2	50	30	15.0	x	25.0		41.7	
12	2	45	30	20.0	x	20.0		44.4	
13	1	40	15	12.5	x	15.0		20.8	
14	1	40	15	12.5	x	15.0		20.8	

2023 STREET RECONSTRUCTION					
AREA NO.	TYPE	APPROX. DIMEN.		EST S.F.	NOTES
A	Curb Ramp	8	x 20	160.0	ADA Plate - Cast Iron & Adjust Water Valve
B	Curb Ramp	8	x 20	160.0	(QTY 2) ADA Plate - Cast Iron
C	Curb Ramp	8	x 20	160.0	ADA Plate - Cast Iron
D	Curb Ramp	4	x 7	28.0	ADA Plate - Cast Iron
E	Sidewalk	4	x 8	32.0	
F	Curb Ramp	5	x 8	40.0	ADA Plate - Cast Iron
G	Sidewalk	4	x 8	32.0	
H	Curb Ramp	6	x 8	48.0	ADA Plate - Cast Iron
J	Sidewalk	4	x 8	32.0	Adjust Water Valve



**SMALL AREA CONCRETE PAVEMENT REPAIR DETAIL**  
NOT TO SCALE



**E & A CONSULTING GROUP, INC.**  
Engineering • Planning • Environmental & Field Services

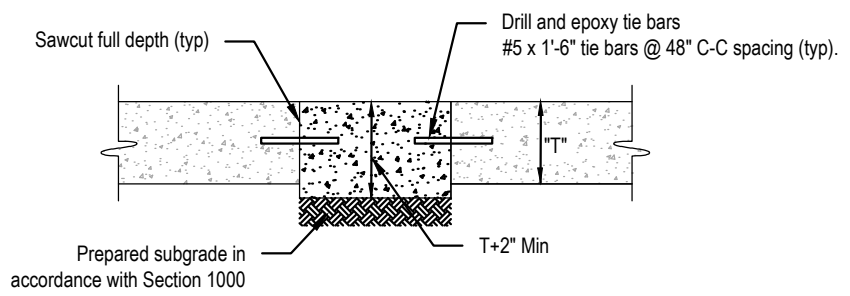
**E & A CONSULTING GROUP, INC.**  
Engineering Answers

**SPRINGBROOK**  
2023 STREET  
RECONSTRUCTION  
SID 504  
DOUGLAS COUNTY, NEBRASKA

**EAST**

Proj No: P2003.18.1.005  
Date: 06/13/2023  
Designed By: TAMW  
Drawn By: JMB  
Scale: 1" = 20'  
Sheet: 2 of 5

6/13/2023 2:49 PM K:\Projects\2003\18\1\p05\Engineering\CAD Files\Paving\Springbrook 2023 Street Reconstruction-000.dwg  
Jessica Brown



**SMALL AREA CONCRETE PAVEMENT REPAIR DETAIL**  
NOT TO SCALE

2023 STREET RECONSTRUCTION									
AREA NO.	NO. POURS	SAW CUT L.F.	CURB L.F.	WIDTH	X	LENGTH	LARGE AREA EST S.Y.	SMALL AREA EST S.Y.	NOTES
15	2	50	30	15.0	x	25.0		41.7	
16	2	50	60	25.0	x	30.0	83.3		Adjust Manhole
17	1	40	30	10.0	x	20.0		22.2	Adjust Manhole
18	1	26	20	3.0	x	20.0		6.7	Curb Inlet Throat
19	1	40	15	12.5	x	15.0		20.8	
20	1	40	15	12.5	x	15.0		20.8	
21	2	50	30	15.0	x	25.0		41.7	
22	1	40	15	12.5	x	15.0		20.8	
23	1	40	15	12.5	x	15.0		20.8	
24	1	55	30	12.5	x	30.0		41.7	
25	1	45	20	12.5	x	20.0		27.8	
26	2	65	45	12.5	x	15.0	20.8		Adjust Manhole
				12.5	x	30.0	41.7		
27	1	55	30	12.5	x	30.0		41.7	
28	1	40	15	12.5	x	15.0		20.8	
29	2	50	60	25.0	x	30.0	83.3		
30	2	50	30	15.0	x	25.0		41.7	
31	2	50	30	15.0	x	25.0		41.7	
32	2	90	10	35.0	x	30.0	116.7		

2023 STREET RECONSTRUCTION						
AREA NO.	TYPE	APPROX. DIMEN.		EST S.F.	NOTES	
I	Curb Ramp	8	x	20	160.0	ADA Plate - Cast Iron & Adjust Manhole

**E & A CONSULTING GROUP, INC.**  
Engineering • Planning • Environmental & Field Services  
10809 Mill Valley Road, Suite 100 • Omaha, NE 68154  
Phone: 402.854.4700 • Fax: 402.855.3559  
www.eandagroup.com  
State of NE Certificate of Authorization #CA0008

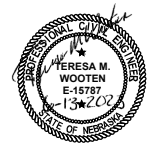


SPRINGBROOK  
2023 STREET  
RECONSTRUCTION  
SID 504  
DOUGLAS COUNTY, NEBRASKA

WEST

Revisions	Date	Description
1	06/13/2023	ISSUED FOR BIDDING

Proj No: P2003181.005  
 Date: 06/13/2023  
 Designed By: TAMM  
 Drawn By: JMB  
 Scale: 1" = 20'  
 Sheet: 3 of 5




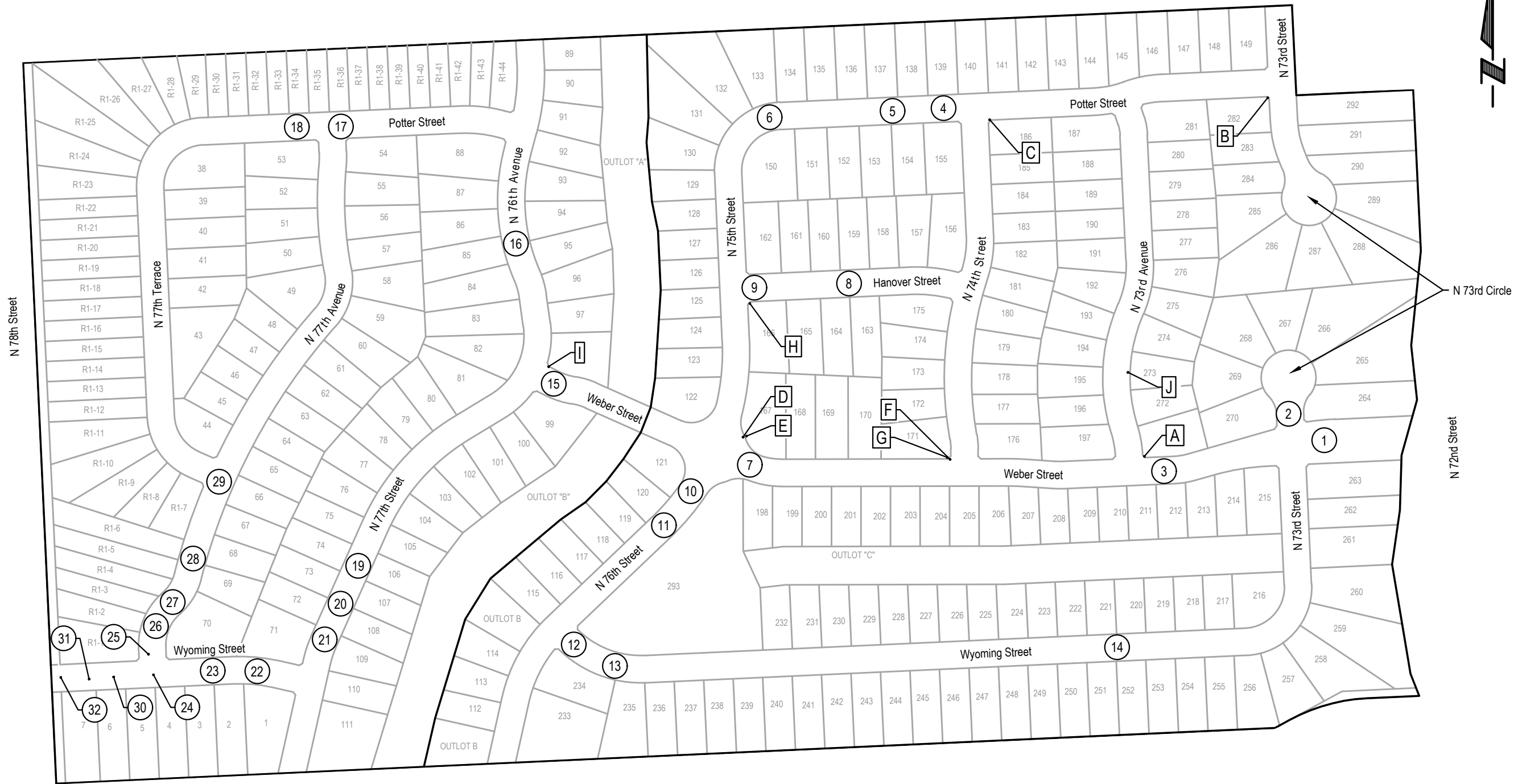



2023 STREET RECONSTRUCTION									
AREA NO.	NO. POURS	SAW CUT L.F.	CURB L.F.	WIDTH	X	LENGTH	LARGE AREA EST S.Y.	SMALL AREA EST S.Y	NOTES
1	1	54		13.0	x	14.0		20.2	
2	2	75		12.5	x	25.0		34.7	
3	1	71	45	12.8	x	45.0	63.8		
4	2	65	45	12.5	x	30.0		41.7	
5	2	80	60	25.0	x	30.0	83.3		
				12.5	x	30.0	41.7		
6	2	65	45	12.5	x	30.0	41.7		
				12.5	x	15.0	20.8		
7	1	55	30	12.5	x	30.0		41.7	
8	2	50	30	15.0	x	25.0		41.7	
9	2	65	45	9.0	x	25.0		25.0	
				12.5	x	15.0		20.8	
10	1	35	15	10.0	x	15.0		16.7	
11	2	50	30	15.0	x	25.0		41.7	
12	2	45	30	20.0	x	20.0		44.4	
13	1	40	15	12.5	x	15.0		20.8	
14	1	40	15	12.5	x	15.0		20.8	
15	2	50	30	15.0	x	25.0		41.7	
16	2	50	60	25.0	x	30.0	83.3		Adjust Manhole
17	1	40	30	10.0	x	20.0		22.2	Adjust Manhole
18	1	26	20	3.0	x	20.0		6.7	Curb Inlet Throat
19	1	40	15	12.5	x	15.0		20.8	
20	1	40	15	12.5	x	15.0		20.8	
21	2	50	30	15.0	x	25.0		41.7	
22	1	40	15	12.5	x	15.0		20.8	
23	1	40	15	12.5	x	15.0		20.8	
24	1	55	30	12.5	x	30.0		41.7	
25	1	45	20	12.5	x	20.0		27.8	
26	2	65	45	12.5	x	15.0	20.8		Adjust Manhole
				12.5	x	30.0	41.7		
27	1	55	30	12.5	x	30.0		41.7	
28	1	40	15	12.5	x	15.0		20.8	
29	2	50	60	25.0	x	30.0	83.3		
30	2	50	30	15.0	x	25.0		41.7	
31	2	50	30	15.0	x	25.0		41.7	
32	2	90	10	35.0	x	30.0	116.7		

2023 STREET RECONSTRUCTION						
AREA NO.	TYPE	APPROX. DIMEN.			EST S.F.	NOTES
A	Curb Ramp	8	x	20	160.0	ADA Plate - Cast Iron & Adjust Water Valve
B	Curb Ramp	8	x	20	160.0	(QTY 2) ADA Plate - Cast Iron
C	Curb Ramp	8	x	20	160.0	ADA Plate - Cast Iron
D	Curb Ramp	4	x	7	28.0	ADA Plate - Cast Iron
E	Sidewalk	4	x	8	32.0	
F	Curb Ramp	5	x	8	40.0	ADA Plate - Cast Iron
G	Sidewalk	4	x	8	32.0	
H	Curb Ramp	6	x	8	48.0	ADA Plate - Cast Iron
I	Curb Ramp	8	x	20	160.0	ADA Plate - Cast Iron & Adjust Manhole
J	Sidewalk	4	x	8	32.0	Adjust Water Valve



<b>E &amp; A CONSULTING GROUP, INC.</b> Engineering • Planning • Environmental & Field Services <small>11809 Mill Valley Road, Suite 100 • Omaha, NE 68154          Phone: 402.265.4700 • Fax: 402.265.3559          www.eandagroup.com          State of NE Certificate of Authorization #CA0008</small>							
 <b>E &amp; A CONSULTING GROUP, INC.</b> Engineering Answers							
SPRINGBROOK 2023 STREET RECONSTRUCTION <small>SID 504          DOUGLAS COUNTY, NEBRASKA</small>							
<b>TOTAL QUANTITIES</b>							
Revisions <table border="1"> <tr> <th>No.</th> <th>Date</th> <th>Description</th> </tr> <tr> <td> </td> <td> </td> <td> </td> </tr> </table>	No.	Date	Description				Proj No: P2003181.005 Date: 06/13/2023 Designed By: TMM Drawn By: JMB Scale: N/A Sheet: 4 of 5
No.	Date	Description					



E & A CONSULTING GROUP, INC. Engineering • Planning • Environmental & Field Services <small>10809 Mill Valley Road, Suite 100 • Omaha, NE 68154                  Phone: 402.854.7100 • Fax: 402.855.3559                  Website: www.eandagroup.com                  State of NE Certificate of Authorization #CA0008</small>							
 Engineering Answers							
SPRINGBROOK 2023 STREET RECONSTRUCTION <small>SID 504                  DOUGLAS COUNTY, NEBRASKA</small>							
COMPOSITE MAP							
Revisions <table border="1"> <thead> <tr> <th>Date</th> <th>Description</th> </tr> </thead> <tbody> <tr> <td>06/13/2023</td> <td>TAM</td> </tr> <tr> <td></td> <td>JMB</td> </tr> </tbody> </table>	Date	Description	06/13/2023	TAM		JMB	Prog No: P2003181.005 Date: 06/13/2023 Designed By: TAM Drawn By: JMB Scale: 1" = 200' Sheet: 5 of 5
Date	Description						
06/13/2023	TAM						
	JMB						